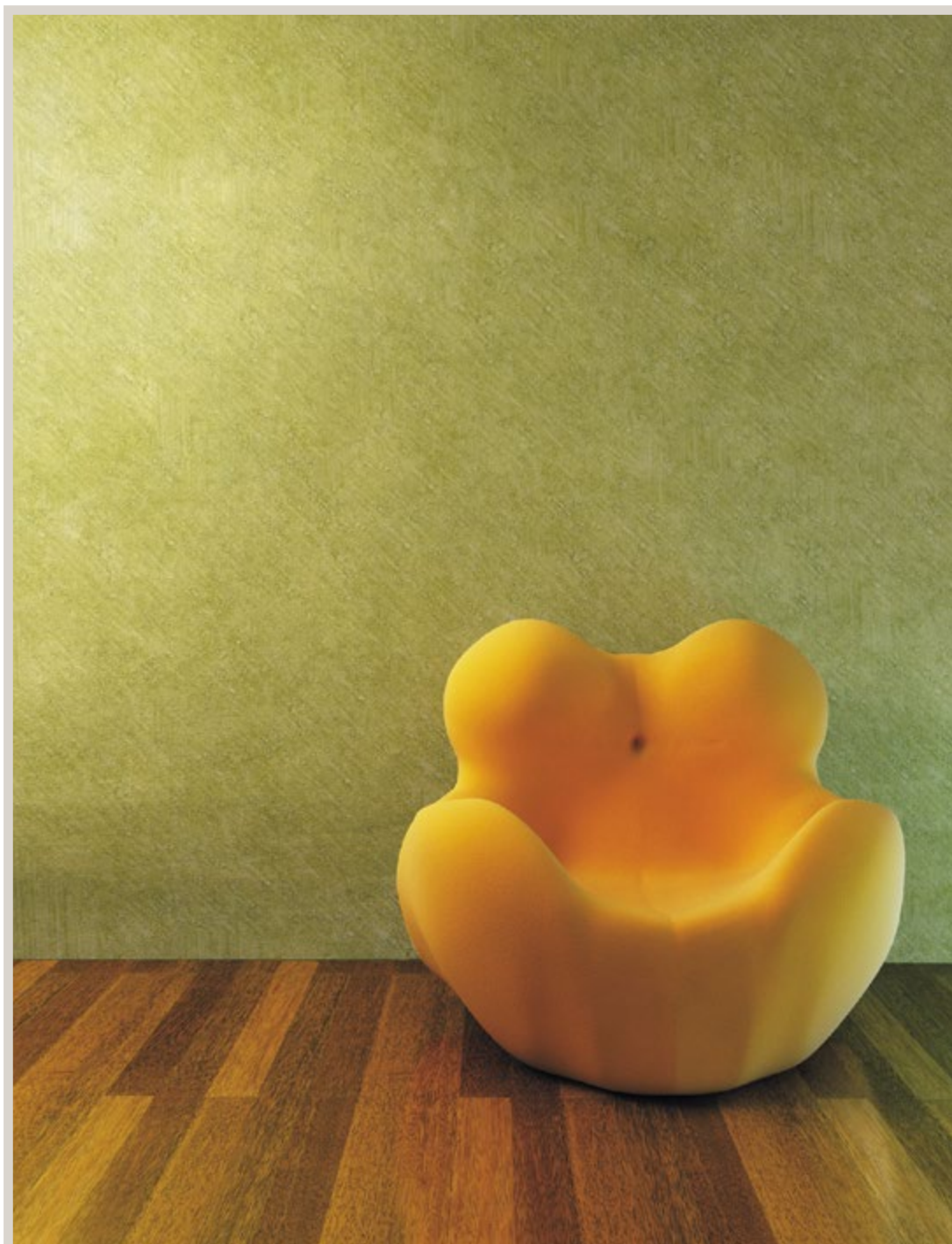
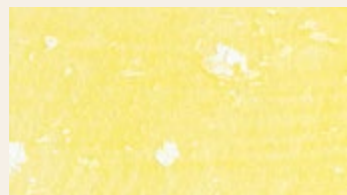


# Tuscania Antica

Sistema policromatico ad effetto "patina antica" per interni  
*Polychromatic system for interiors with "antique patina" effect*







15800

15804

15810

15817



15801

15805

15811

15818



15806

15812

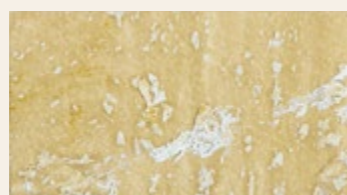
15819

# Tuscania Antica



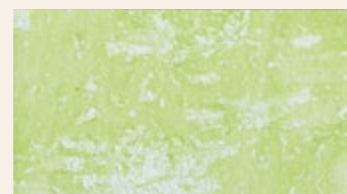
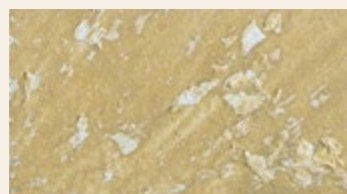
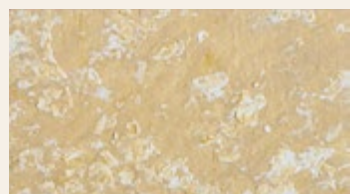
15813

15820



15807

15814

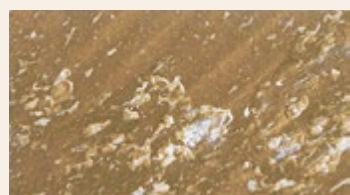


15802

15808

15815

15821



15803

15809

15816

15822



# Tuscania Antica

## SISTEMA POLICROMATICO AD EFFETTO "PATINA ANTICA" PER INTERNI

Su fondo preparato con TUSCANIA FONDO STRUTTURATO, applicare uno o due strati di TUSCANIA ANTICA con pennello "spalter". Prima che essicchi completamente, è possibile accentuare l'effetto antichizzato ripassando la superficie con spatola di plastica.  
RESA: 7-10 m<sup>2</sup>/l  
Per maggiori informazioni consultare la scheda tecnica.

## POLYCHROMATIC SYSTEM FOR INTERIORS WITH "ANTIQUÉ PATINA" EFFECT

On substrate prepared with TUSCANIA FONDO STRUTTURATO, apply one or two layers of TUSCANIA ANTICA with "spalter" brush. Before it dries out completely, it is possible to emphasize the effect by working into the substrate with a plastic trowel.  
YIELD: 7-10 m<sup>2</sup>/l  
For more information please check the technical data sheet.

## SYSTÈME POLYCHROMATIQUE À EFFET "PATINE ANCIENNE" POUR INTÉRIEURS

Sur la base préparée avec TUSCANIA FONDO STRUTTURATO, appliquer TUSCANIA ANTICA en une ou deux couches avec pinceau type « spalter ». Il est possible d'augmenter l'effet "ancien" en travaillant la surface avant le séchage complet avec truelle en plastique.  
Rendement: 7-10 m<sup>2</sup>/l  
Pour plus d'informations consulter la fiche technique.

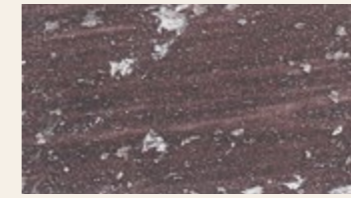
## POLYCHROMATISCHES SYSTEM MIT "PATINA" EFFEKT FÜR DEN INNENBEREICH

TUSCANIA FONDO STRUTTURATO als Untergrund wird in zwei Schichten mit Rolle aufgetragen. Dann TUSCANIA ANTICA einmal oder zweimal mit Bürste oder Rolle auftragen und eventuell mit Stahl oder Kunststoffspachtel im Nass glätten.  
Ergiebigkeit: 7-10 m<sup>2</sup>/l  
Für weitere Infos steht das technische Merkblatt zur Verfügung.





15823



15828



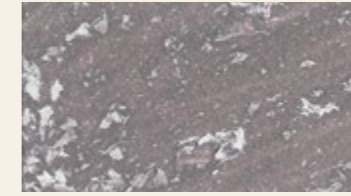
15834



15839



15824



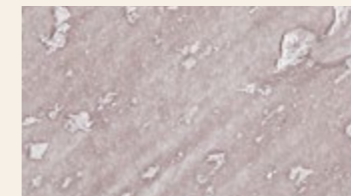
15829



15835



15840



15830

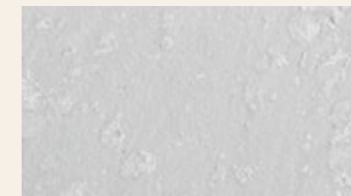
Sistema policromatico ad effetto "patina antica" per interni  
*Polychromatic system for interiors with "antique patina" effect*



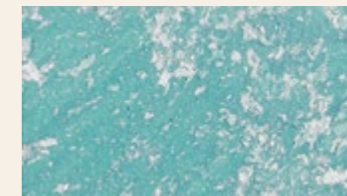
15841



15825



15831



15836



15842



15826



15832



15837



15843



15827



15833



15838



15844



www.novacolor.it



freedot

07/2015

N000012

**novacolor**<sup>™</sup>  
I colori dell'Architettura

NOVACOLOR srl - 47122 Forlì - Italia  
Tel +39 0543 401840 - fax +39 0543 414585  
Via U. Aldrovandi, 10 - info@novacolor.it



NOVACOLOR is committed to reduce the environmental impact by producing friendly materials.

Made in Italy



**AZIENDA CON SISTEMA  
DI GESTIONE QUALITÀ  
CERTIFICATO DA DNV GL  
= ISO 9001 =**

**COMPANY WITH  
QUALITY SYSTEM  
CERTIFIED BY DNV GL  
= ISO 9001 =**